



KIZUNA PRESENTS

HISASHIBURI: A LONG TIME SINCE THE LAST TIME





ARATANI *foundation*

**CONGRATULATES KIZUNA
FOR ANOTHER SUCCESSFUL
YEAR OF EDUCATING,
EMPOWERING, AND
ENGAGING THE NEXT
GENERATION!**



WELCOME MESSAGE

Dear Kizuna Family,

Thank you for joining us at Hisashiburi: A Long Time Since the Last Time! Last year, we celebrated 10 Years of Kizuna: an exciting milestone that we had hoped to share with you all in-person. This year, we are excited to welcome folks back to in-person activities like our Hisashiburi celebration in addition to our flagship Summer Camp and Leadership programs.

Today, you'll learn a little bit about Kizuna and enjoy one of our iconic workshops from Leadership, our signature High School program, to give you a taste of what our students take home with them as we seek to educate, empower, and engage the next generation of community leaders.

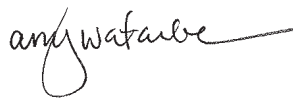
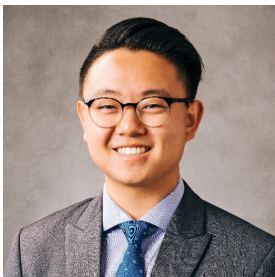
Thank you to each of our sponsors, volunteers, supporters, participants, and all of you for being here today and for being part of this movement that will sustain the community for generations to come. Your generosity allows us to continue utilizing our Japanese American cultural values to grow and inspire leaders from a young age, instilling the importance of community-mindedness and involvement.

Lastly, we'd like to thank our incredible Kizuna staff – Chris Fitzgerald, Elaine Hang, Emily Hoang, and Lauren Kojima – and the Hisashiburi Committee for their tireless work and who have made this afternoon possible. Thank you to all and we hope you enjoy the festivities!

With Kansha,



Bryce Ikemura
Chair, Board of Directors



Amy Watanabe
Hisashiburi Committee Chair



FROM THE EXECUTIVE DIRECTOR

Dear Friends, Family, and Supporters,

This afternoon marks our first in-person meeting of the Kizuna community in over two years. It is a much-anticipated annual gathering of the friends, family, and alumni that I know to be so committed and passionate about this work. In my brief time as Executive Director, I have been the proud collector of Kizuna stories and experiences from anyone willing to share them with me—and there have been many of you, indeed. It has been a humbling experience to step into this role with such a storied and revered past.

As a way to honor the changes we have weathered both together and separately, we hope that Hisashiburi will serve as both a reunion and a renewal of commitment to our mission. During our event we will hear from three Kizuna alumni. Nicole Oshima (Nikkei Community Internship and Leadership alum) will discuss the ripple effects of her Kizuna experiences. An interactive demonstration of “Tower of Power” will be hosted by two more next generation leaders. Eric Komatsu (Summer Camp Counselor, Kizuna Board Member) and Erin Hayashida (Leadership alum, designer of our new Summer Camp t-shirt), will facilitate this hands-on lesson in cooperation, privilege, and tabletop construction. In addition to building towers, I invite you all to build bridges and relationships while you are here today at the Budokan. There is so much more that we can accomplish together.

Our work to educate, empower, and engage the next generation does not happen without your belief, support, and generosity. To our community at large, I thank you for your unwavering contributions to our work not only now, but over the last two years. It was, and continues to be a time of turbulence and growth and your commitment is a testament to the values the Kizuna founders set forth eleven years ago. In addition, I extend my gratitude to the staff: Elaine Hang, Emily Hoang, and Lauren Kojima. The patience, knowledge, ingenuity, and remarkable energy that you all bring to the office is a joy to be around. Lastly, thank you to the Planning Committee and Board of Directors that have given so much of their time and experience to create such a memorable afternoon together.

It has been a long time since the last time, and today we reflect back on where we have been and celebrate what stretches out ahead of us.



Chris Fitzgerald
Executive Director, Kizuna



EVENT PROGRAM

Welcome

**Message from Kizuna's Board Chair
and Hisashiburi Committee Chair**

Bryce Ikemura and Amy Watanabe

Message from Kizuna's Executive Director

Chris Fitzgerald

Alumni Spotlight

Nicole Oshima

Tower of Power

Eric Komatsu, Erin Hayashida

Closing



THANK YOU SPONSORS

TITLE



ARATANI *foundation*

PLATINUM

Keith and Cecilia Terasaki



KAWAGUCHI-KIHARA
MEMORIAL FOUNDATION



GOLD

Henry Ota and Hiroyo Nonoyama



SILVER

Bill, Christy and Kiana Seki
Gonsaku & Mine Ito Family
Megan Ono & Friends



BRONZE

Deborah Ching & Mark Mayeda
Joyce & Glen Komatsu & Family
Kizuna Board Alumni
Alan & Yvonne Nishio
Onishi & Associates
TDW + Co
Helen & David Yamahata

COMMUNITY

Debra Nakatomi & Bob Miyamoto
Amy Watanabe & Derek Su



PRESENTER SPOTLIGHTS

NICOLE OSHIMA



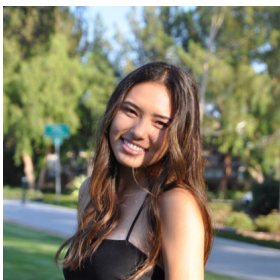
Nicole Oshima graduated from the University of California, Los Angeles (UCLA) in 2020 with a B.A. in Communications and a minor in Asian American Studies. Nicole has been a part of Kizuna since 2015. As a high schooler, she was a participant for Kizuna's Leadership program for four years. Since then, she's been a counselor at the West Los Angeles and Pasadena Summer Camps as well as for Track 1 in our Leadership program. She was an NCI intern in 2017, serving as the Marketing Intern for Kizuna.

ERIC KOMATSU



Eric Komatsu first became involved with Kizuna in 2015 as a participant in Kizuna's Nikkei Community Internship program. His internship in the Little Tokyo community reinforced a sense of pride and commitment to the Japanese American community that began as a youth participating in JA basketball and attending community events. Ever since, he has been active in the Kizuna pipeline as a counselor for both Kizuna's Summer Camp and Leadership programs. In 2022, he joined the Kizuna board hoping to pass on his love of community and culture to the next generation of leaders. Eric is currently studying to pursue a career in Software Engineering and enjoys spending his weekends watching movies and playing basketball at the Terasaki Budokan.

ERIN HAYASHIDA



Erin first got involved with Kizuna during high school when she participated in the Leadership program and volunteered at the Anaheim location for Summer Camp as a Jr. Counselor. Her involvement with Kizuna's programs led her to become very passionate about volunteering in the JA community and maintaining her connections with her culture. Erin is a first year student at the University of Cal State Long Beach and plans to obtain a Bachelor's degree in Graphic Design. Currently, Erin enjoys being a member of her university's Nikkei Student Union and spends her free time running or catching up with friends.

Since 1918



Fukui is Community



707 East Temple Street, Los Angeles, California 90012
(213) 626-0441 | fukuimortuary.com



Congratulations, Kizuna on Hisashiburi:

A Long Time Since the Last Time!



KIZUNA BOARD ALUMNI

KRISTIN FUKUSHIMA, JANET HIROSHIMA AND
CHRISTOPHER PADILLA, JESSIE KIKUCHI AND
BRENT MORI, BRANDON LEONG AND CHRIS
OBI, STACY TOYOTA



Little Tokyo Service Center

POSITIVE CHANGE FOR
PEOPLE AND PLACES

231 E 3rd St, Ste G106
Los Angeles, CA 90013

213-473-3030
www.LTSC.org

ABOUT KIZUNA



OUR HISTORY AND GROWTH

In 2011, Kristin Fukushima, Sen Sugano, and Stacy Toyota – along with the leadership of founding Executive Director, Craig Ishii, formed Kizuna with the mission to create a space for the next generation of leaders. Since the beginning, Kizuna has been the answer in the Japanese American community to the question, “Where is the next generation?”

Kizuna’s mission is to educate, empower, and engage the next generation with the aim of developing strong leaders for our community’s future. Kizuna has given over 7,000 youth the opportunity to get involved and give back to their community.



OUR PROGRAM PIPELINE

The individual programs within our program pipeline teach a wide variety of topics, all centered on the Japanese American community. Our pipeline demonstrates how our age-specific programming effectively educates, empowers, and engages youth in our community and beyond at each age level.

ELEMENTARY / MIDDLE SCHOOL

SUMMER CAMP

Kizuna's regional, week-long day camp program teaching Japanese traditions, values, history, and culture.



HIGH SCHOOL

COUNSELOR IN TRAINING

Introductory leadership as a junior counselor at Kizuna's Summer Camp programs.



LEADERSHIP

Our premier leadership, development, networking, and community service program for high school students.

COLLEGE STUDENTS

COUNSELORS

Going full-circle, our students now become counselors to grow and mentor the next generation of youth.



INTERNSHIP

An 8-week paid, full-time, real work internship program throughout the summer at key community organizations and businesses.

ADULT

COMMUNITY CONNECTOR

Our Community Connector is designed to build experiences, networks, and skills for next generation leaders to get involved in a variety of opportunities our community has to offer.

COMMUNITY CONNECTOR

BOARD FELLOWSHIP

Skill building and practical experience serving on a board prepares working professionals for leadership at the highest level of an organization.

COUNSELORS & INSTRUCTORS

Teaching and leadership roles give counselors and instructors opportunities to work directly with Kizuna's youth programs and impact the next generation.

ANNUAL EVENTS

Community and networking events provide opportunities for Kizuna veterans and newcomers alike to get involved in our community and work.



Thank you to Kizuna for bringing our community together through Hisashiburi!

HOW HISASHIBURI HAS IT BEEN SINCE YOU LAST SPOKE TO AN OLDER ADULT WHOM YOU LOVE?

While it may seem small, one phone call or conversation can go a long way.

▸ **Tip #1 – Acknowledge different vocabularies.**

Younger or older, people may be unfamiliar with vocabularies you normally use. It's okay to ask questions if you don't know. Be patient to learn from each other.

Visit keiro.org/hisashiburi for more tips!

Scan Here to Learn More Tips!



Founded in 1961, Keiro improves the quality of life for older adults and their caregivers in the Japanese American community of Los Angeles, Orange, and Ventura counties. For more information, visit keiro.org.



Go For Broke National Education Center is proud to be a sponsor of Kizuna's 2022 Hisashiburi



Looking forward to future visits!

REMEMBER. EDUCATE. INSPIRE.
www.goforbroke.org

355 E. 1st Street, Suite 200, Los Angeles, CA 90012 | (310) 328-0907

Although it's been a while, we're better together.

TDW+Co is proud to support Kizuna's Hisashiburi. Thank you for continuing to build and foster the next generation of community leaders!



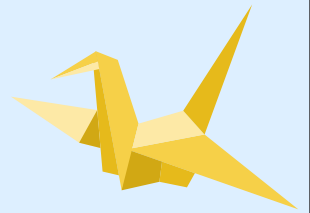
tdwandco.com

WE ARE PROUD TO SUPPORT KIZUNA AND THE NEXT GENERATION!

**HENRY OTA AND
HIROYO NONOYAMA**



HELP US FILL THE SKY



A long time ago, Kizuna was founded by a group of aspiring community leaders who wished to have a space where Japanese American youth and young professionals could learn about and carry on the legacies of those who shaped Little Tokyo

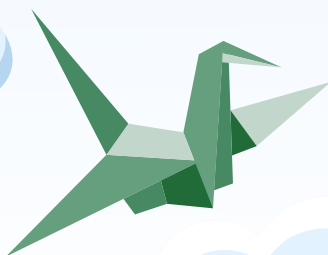


and Japanese American culture. Their wish came true as Kizuna grew to serve thousands of Japanese American youth since its founding.

As Kizuna enters a new chapter in our story, we wish to create a space where our participants can grow into the leaders they want to see in the world. You can help us make this wish come true by contributing to a *senbazuru*, and Fill Our Sky with 1,000 origami cranes.

For \$5, you can make a wish or dedicate one of our handmade cranes and Fill Our Sky to raise funds to continue the Kizuna mission.

Visit the Crane table to dedicate a crane today!





WOLF & CRANE PROUDLY SUPPORTS KIZUNA!

LITTLE TOKYO'S NEIGHBORHOOD BAR
 LOCATED IN THE HEART OF DOWNTOWN LOS ANGELES,
 WE FOCUS ON JAPANESE WHISKY AND CRAFT COCKTAILS.

PHONE (213) 935-8249 WEBSITE WOLFANDCRANEBAR.COM


LOCATION 366 E 2ND ST. LOS ANGELES, CA 90012 HOURS MON - FRI - 5PM-2AM SAT - SUN - 2PM-2AM

Proud to support

KIZUNA'S HISASHIBURI

and the next generation of leaders!

- Amy Watanabe & Derek Su




Kodomo no tame ni

FOR THE SAKE OF THE CHILDREN

The **Gonsaku & Mine Ito Family** is proud to support **Kizuna** and the next generation of community leaders.





SEKI
NISHIMURA
& WATASE LLP
ATTORNEYS AT LAW

600 Wilshire Blvd., Ste. 1250 ■ Los Angeles, California 90017 ■ Phone: 213.481.2868 ■

www.snw-law.com



We are so happy to see everyone in person in support of Kizuna!

We ♥ Kizuna

Congratulations on another year of impact - cultivating a new wave of leaders to ensure the future of our community! Excited for the journey ahead...

Megan Ono & Friends





**CONGRATULATIONS
ON YOUR 11TH YEAR
ANNIVERSARY!**

**DAVID AND HELEN
YAMAHATA**

Wishing you continued success!

Onishi & Associates

Ryan Onishi

Ryan Narasaki

(310) 496-5571

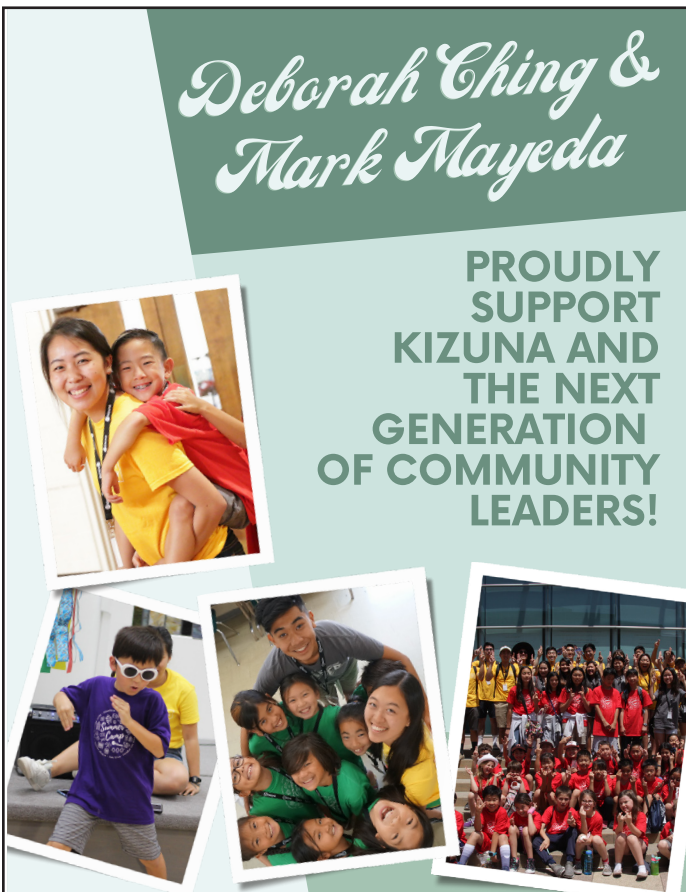
(310) 496-5565

ryan.t.onishi@ampf.com

ryan.t.narasaki@ampf.com



Be Brilliant®



*Deborah Ching &
Mark Mayeda*

**PROUDLY
SUPPORT
KIZUNA AND
THE NEXT
GENERATION
OF COMMUNITY
LEADERS!**



**IS PROUD TO SUPPORT
KIZUNA'S 2022 HISASHIBURI!**

Pikunico is a neighborhood-friendly, fast-casual Japanese fried chicken concept. Pikunico offers house made karaage (Japanese-style fried chicken) served in a sandwich or basket along with market-driven salads, sides and desserts.



767 S Alameda St Suite 122, Los Angeles, CA 90021
pikunico.com | (213) 278-0407

BOARD, STAFF, & ADVISORY COUNCIL

BOARD

Chair

Bryce Ikemura

Vice Chair

Megan Ono, MNLM

Secretary

Ashley Honma

Treasurer

Kevin Oyama, CPA

Board-at-Large

Kari Kadomatsu, Esq.

Eric Komatsu

Candice Shikai, Esq.

Robin Vanneman

Amy Watanabe

STAFF

Executive Director

Chris Fitzgerald

Program and Administrative Coordinator

Lauren Kojima

Program and Development Manager

Elaine Hang

Development and Communications Coordinator

Emily Hoang

ADVISORY COUNCIL

Deborah F. Ching

James Choi

Gerald Fukui

Warren T. Furutani

Deputy Chief Terry Hara (Ret.)

Noelle Ito

traci kato-kiriyama

Jessica Kikuchi

Kathy Masaoka

Daren Mooko

Debra Nakatomi

Alan Nishio

Helen H. Ota

Henry Ota

Sandy Sakamoto

Christine Sato-Yamazaki

Bill Seki

Diane Tanaka Suzuki

Bryan Takeda

Craig Tomiyoshi

Diane Ujiye

Deputy Chief Dave Yamahata (Ret.)

THANK YOU TO EVERYONE THAT MADE HISASHIBURI POSSIBLE

2022 HISASHIBURI COMMITTEE

Chris Fitzgerald
Elaine Hang
Emily Hoang
Bryce Ikemura
Kari Kadomatsu
Lauren Kojima
Michi Lew

Megan Ono
Helen Ota
Candice Shikai
Brian Takao
Stacy Toyota
Robin Vanneman
Amy Watanabe

Dave Yamahata
Helen Yamahata

SILENT AUCTION DONORS

Azay
Alvin S. Toma and Present Perfect Nursery
Brandon Leong
Burst Oral Care
Candice Shikai
Carol Tanita
Far Bar
George Sugimoto and Via Verde Country Club
Go For Broke
Helen and Dave Yamahata
Japanese American Cultural & Community Center

Jessie Kikuchi
Janet Hiroshima and Christopher Padilla
Japanese American National Museum
Kari Kadomatsu
Mitch Maki
Randolph Sinnot
Robin Vanneman
Roy Kuroyanagi and Japangeles
Stacy Toyota
Universal Studios

SPECIAL THANKS

Asahi Beverages America, Inc. - Thank you for the drinks!
Andrea Uyeda and edibol.com - Thank you for the dessert baskets!
Brewyard - Thank you for your continued partnership!
Dean Hata, dr. oc2pus - Amazing DJ! Thank you for coming out!
Helen Ota & Amy Watanabe - Beautiful centerpiece vases!
Mark Hirai, Elite Graphics - Beautiful program booklets, activity supplies, and signage!
Pikunico - Best karaage chicken!
Southern California Flower Market - Beautiful floral donations!
Terasaki Budokan - Thank you for hosting us and your generous hospitality!
Wolf & Crane Bar - One of our favorite go-to bars in Little Tokyo!

Thank you to all of our amazing volunteers who helped make Hisashiburi a success!



What's important to you is important to us

Union Bank[®] understands the importance of community. We are deeply grateful for the personal and professional ties we have developed throughout the years. And with our proven history of solid financial performance, we will continue to put our strength to work for you. Together with you, we look forward to building a successful future for generations to come.

unionbank.com   



©2021 MUFG Union Bank, N.A. All rights reserved. Member FDIC.
Union Bank is a registered trademark and brand name of MUFG Union Bank, N.A. unionbank.com



PROGRAMS FOR ALL AGES

ABOUT US

Our mission is to provide cultural programs to educate, empower, and engage the next generation of community leaders. We educate our participants on Japanese American culture and heritage and remain open to anyone who is interested in learning more about our community.

OUR PROGRAMS

- Summer Camp (ages 7-13)
- Leadership (ages 14-18)
- Jr. Counselor (ages 14-18)
- Counselor (ages 18+)
- Nikkei Community Internship (ages 15-19)
- Board Fellowship (ages 22+)

LEARN MORE!

CONTACT US:

(213) 973-4465
info@kizuna.org
TO LEARN MORE, VISIT US AT GOKIZUNA.ORG

**HISASHIBURI:
A LONG TIME SINCE
THE LAST TIME**

THANK YOU!

FROM YOUR FRIENDS AT

SUPPORT THE NEXT GENERATION TODAY

info@kizuna.org

kizuna
224 S. San Pedro Street, Suite 304
Los Angeles, CA 90012

KIZUNA'S MISSION

We celebrate a future for our community through the education, empowerment and engagement of the next generation. Our cultural programs provide students the next generation a real-world participant in community through the shared skills of leadership, time management and cultural awareness programs that will help them thrive.

BECOME A SUMMER COUNSELOR

ABOUT

Our Counselor program places young adults and high school students in various positions with Kizuna's summer programs. Counselors work directly to shape the lives of campers and teens. Community service has never been more fun and worthwhile than this!

LOCATIONS

- June 27 - July 1, 2022: Downtown Los Angeles
- July 11 - 15, 2022: San Fernando Valley
- July 18 - 22, 2022: Gardena
- July 25 - 29, 2022: Anaheim
- August 1 - 5, 2022: Pasadena
- August 8 - 12, 2022: West Los Angeles

SIGN UP!

CONTACT US:

(213) 973-4465
info@kizuna.org
TO LEARN MORE, VISIT US AT GOKIZUNA.ORG

THANK YOU VERY MOCHI

By Paul Matsushima, Sophie Wang, and Craig Ishii
Story Concept Inspired By Paul Matsushima
Illustrated by Jing Zheng

THANK YOU ELITE GRAPHICS!

Kizuna would like to thank Elite Graphics/Mark Hirai for his incredible work printing all things Kizuna-branded year-round. From flyers to postcards, program booklets to thank you cards and envelopes, Mark's attention to detail is second to none.




Thank you for all your hard work and for being an integral part of our community!

Come visit our neighbor:
Elite Graphics
224 S. San Pedro Street, Suite 302
Los Angeles, CA 90012



STAY UP TO DATE WITH **KIZUNA**

Keep up with Kizuna on our social media accounts as we capture moments through the eyes of the next generation.

-  **GOKIZUNA**
-  **KIZUNA**
-  **KIZUNA LOS ANGELES**



Advisors

Kevin D. Wright

Senior Vice President - Investment Officer
CA Insurance Lic #0E11022

Investment products and services are offered through Wells Fargo Advisors, a trade name used by Wells Fargo Clearing Services, LLC, Member SIPC, a registered broker-dealer and non-bank affiliate of Wells Fargo & Company.

2829 Townsgate Road
Suite 200
Westlake Village, CA 91361
Tel: 805 370 5160
Fax: 805 496 6899
Toll Free: 800 336 1244
kevin.wright@wfa.com



janm  JAPANESE AMERICAN NATIONAL MUSEUM

The Japanese American National Museum congratulates Kizuna as it reunites with friends and families and celebrates the next generation of leaders in Little Tokyo.



Return to Little Tokyo for a visit to JANM!

BeHere / 1942: A New Lens on the Japanese American Incarceration
Through October 9, 2022

Explore the visual archive of the 1942 forced removal of Japanese Americans in new ways.

Sutra and Bible: Faith and the Japanese American World War II Incarceration
Through November 27, 2022

Discover the role religion played in saving the exiled Japanese American community from despair.

Screenshot of the BeHere / 1942 augmented reality installation through the BeHere / 1942 app, which layers 3D renderings of people and vehicles over the urban landscape in the JANM Plaza.

100 N Central Ave
Los Angeles, CA 90012
213.625.0414

janm.org
janmstore.com
DiscoverNikkei.org



**CONGRATULATIONS
TO KIZUNA**

**FOR ELEVEN YEARS OF
HELPING BUILD A
FUTURE FOR OUR
COMMUNITY!**

